

# HTS-VOICE

## Firmware Update Using the HPP-22

1. To get the most out of your HTS-Voice, you will need the HPP-22 PC Program interface and software. If you already have an HPP-22 you will need to download the latest software version. The software is available here [http://hitecrd.co.kr/tester/hpp\\_22.htm](http://hitecrd.co.kr/tester/hpp_22.htm)
2. Install program
  - a. Before installing the latest version make sure to **uninstall** any previous versions of the HPP-22 Software
  - b. Click on the file “Install\_HPP-22 V1.XX” to begin the installation process

20120109\_Install\_hpp\_22\_v1.12(0)



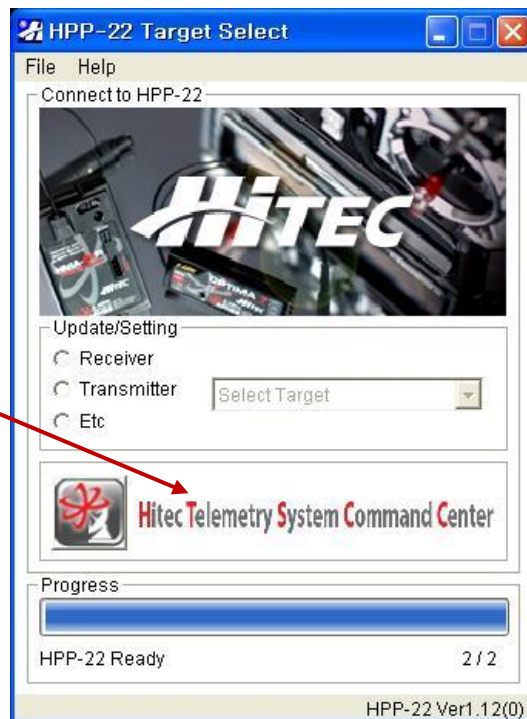
- c. Follow the step by step installation prompts. When the following screen appears the HPP-22 Software has been properly installed. Click finish to launch the program or double click the icon on your desktop to launch the HPP-22 Software.



### 3. Launch the Hitec Telemetry System Command Center Program

After the program is installed and launched, click on the Hitec Telemetry System Command Center icon

Click Here to Launch  
the HTSCC Program



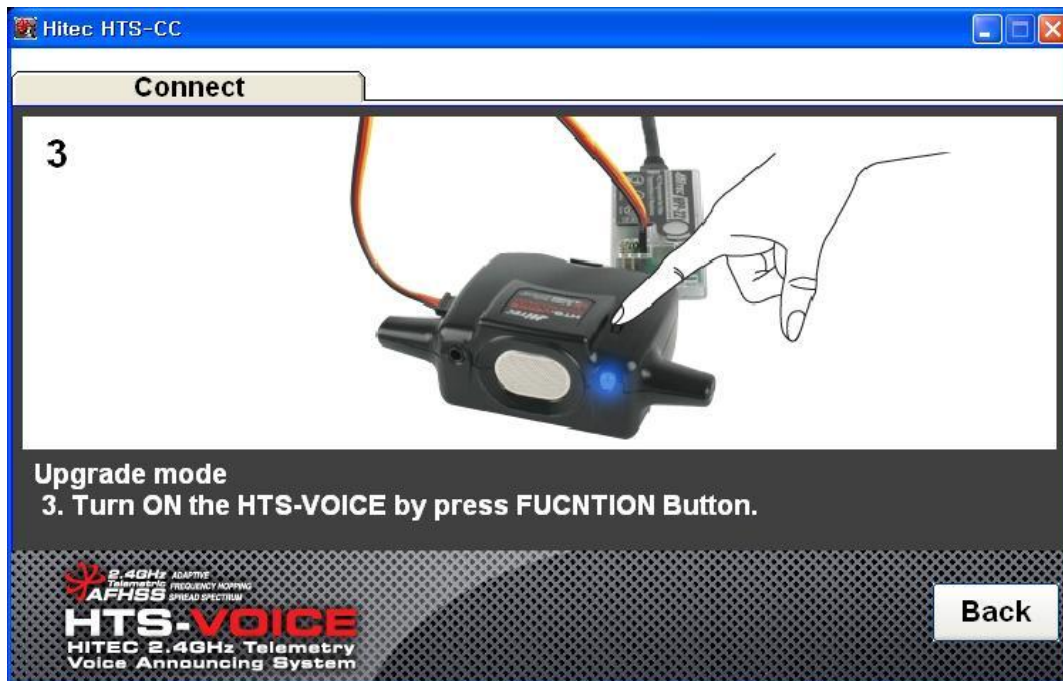
4. Connect HTS-VOICE and run the program. The screen will appear as shown below once the program is executed properly. Click on “HTS-VOICE Function” on the lower right side, select “update” and click on the picture of HTS-VOICE.



2

Select Action then Click  
on the HTS-Voice

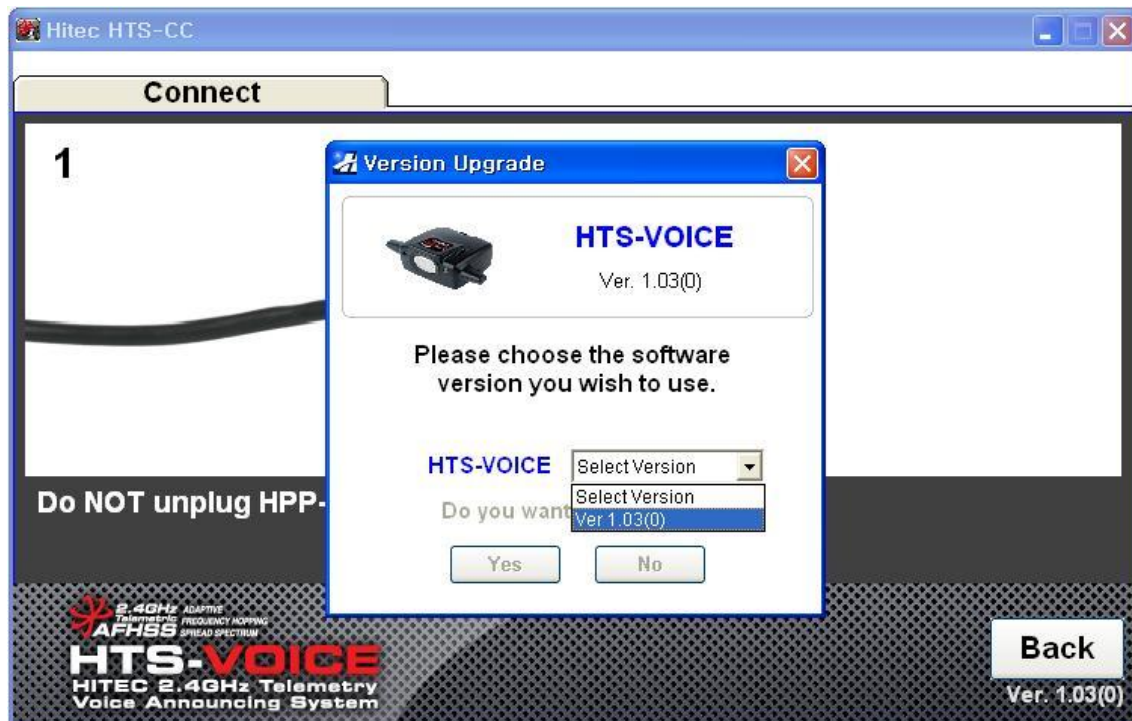
1



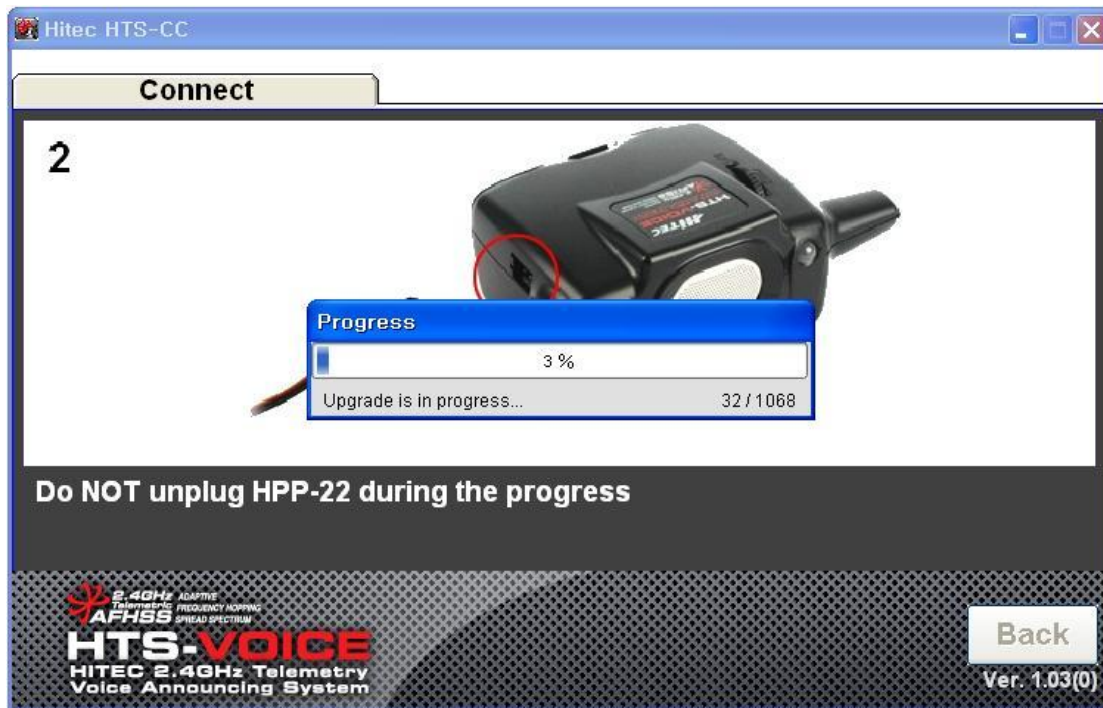
Follow the instructions on the screen to connect HPP-22 to HTS-VOICE.

- (1) Connect 3-pin connector cable included in HPP-22 to P1 channel of HPP-22.
- (2) Connect the other side of the cable to either data channel of HTS-VOICE.
- (3) Press the FUNCTION button to turn on HTS-VOICE.
- (4) LED on HTS-VOICE will blink 3 times and the firmware screen will appear.

Once HTS-VOICE is properly connected to HPP-22, the screen shown below above will appear. Select the latest firmware version and select 'Yes.'



Firmware update progress will be shown like in the picture below.



Once the upgrading process is complete, the Upgrade Completed message will appear as shown below. Click “OK” and it will return to its previous screen. Click on “Back” or close the window to end the upgrade process.



**WARNING:** Use caution when upgrading your firmware. Do not unplug the cable or turn off HTS-VOICE while the firmware upgrade process is in progress doing so may cause irreversible damage to the product

**NOTE:** It is recommended that you install the latest firmware to all your Hitec 2.4GHz equipment to ensure the proper operation of your HTS-VOICE.